

CDO Surfaces Dynamics

Barbara Choroś-Tomczyk

Wolfgang Karl Härdle

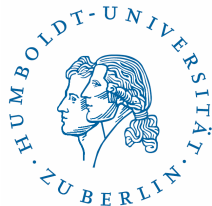
Ostap Okhrin

Ladislav von Bortkiewicz

Chair of Statistics

C.A.S.E. - Center for Applied Statistics and
Economics

Humboldt-Universität zu Berlin



iTraxx over Time

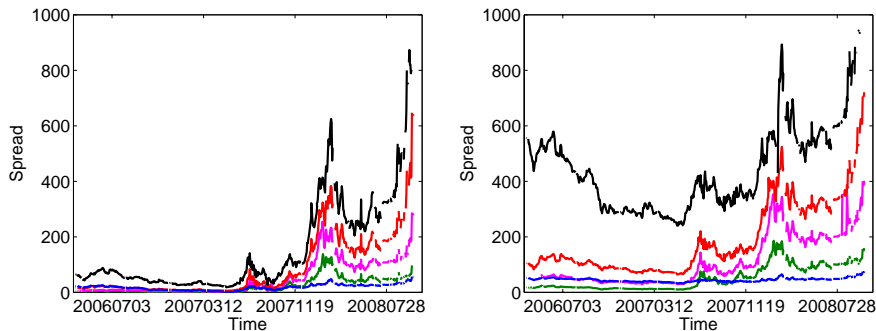


Figure 1: Spreads of iTraxx tranches, Series 5, maturity 5 (left) and 10 (right) years, data from 20060407-20081103. Tranches: 1, 2, 3, 4, 5.



iTraxx Spread Surface

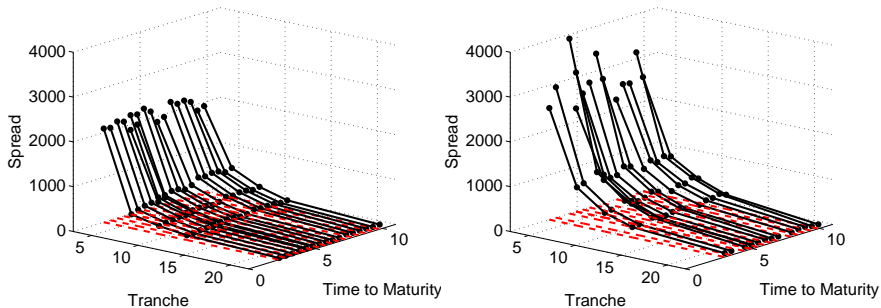


Figure 2: Spreads of tranches of all series observed on 20080909 (left) and 20090119 (right).



Research Goals

- Modelling the dynamics of CDO surfaces
 - ▶ spread surfaces
 - ▶ base correlation surfaces
- Applications in trading



Dynamic Semiparametric Factor Model

Applications:

1. Implied volatility surfaces in M. R. Fengler, W. Härdle and E. Mammen, *JFE* (2007) and B. Park, E. Mammen, W. Härdle, and S. Borak, *JASA* (2009)
2. Risk neutral densities in E. Giacomini, W. Härdle, and V. Krätchmer, *AStA* (2009)
3. Limit order book in W. Härdle, N., Hautsch, and A. Mihoci, *JEF* (2012)
4. Variance swaps in K. Detlefsen and W. Härdle, *QF* (2013)
5. fMRI images in A. Myšicková, S. Song, P. Majer, P. Mohr, H. Heekeren, W. Härdle, *Psychometrika* (2013)



Outline

1. Motivation ✓
2. CDOs
3. DSFM
4. Empirical Study
5. Applications
6. Conclusions



Risk Transfer



iTraxx Europe

- A static portfolio of 125 equally weighted CDS on European entities;
- Sectors: Consumer (30), Financial (25), TMT (20), Industrials (20), Energy (20), Auto (10);
- New series of iTraxx Europe issued every 6 months (March and September) and the underlying reference entities are reconstituted;
- Maturities: 3Y, 5Y, 7Y, 10Y.



Gaussian Copula Model

Default times are modelled from the Gaussian vector $(X_1, \dots, X_d)^\top$:

$$X_i = \sqrt{\rho}Y + \sqrt{1-\rho}Z_i,$$

where Y (systematic risk factor), $\{Z_i\}_{i=1}^d$ (idiosyncratic risk factors) are i.i.d. $N(0, 1)$. Hence:

$$(X_1, \dots, X_d)^\top \sim N(0, \Sigma),$$

with

$$\Sigma = \begin{pmatrix} 1 & \rho & \cdots & \rho \\ \rho & 1 & \cdots & \rho \\ \vdots & \vdots & \ddots & \vdots \\ \rho & \rho & \cdots & 1 \end{pmatrix}.$$



Large Portfolio Framework

Assume that

- ▣ obligors have the same default probability and LGD,
- ▣ one dependence parameter ρ ,
- ▣ d very large.

Computations are simplified significantly when the portfolio loss distribution is approximated:

$$P(\tilde{L} \leq x) = \Phi \left\{ \frac{\sqrt{1-\rho}\Phi^{-1}(x) - \Phi^{-1}(\rho)}{\sqrt{\rho}} \right\}.$$



Correlation's Types

Compound correlation $\rho(l_j, u_j)$, $j = 1, \dots, J$.

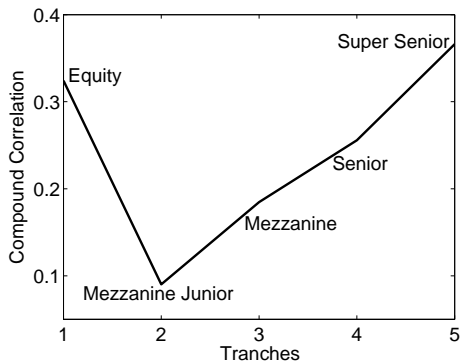


Figure 3: Implied correlation smile in the Gaussian one factor model, 20071022.



Correlation's Types

Base correlation (BC) $\rho(0, u_j)$, $j = 1, \dots, J$.

Represent the expected loss $E\{L_{(l_j, u_j)}\}$ as a difference:

$$E\{L_{(l_j, u_j)}\} = E_{\rho(0, u_j)}\{L_{(0, u_j)}\} - E_{\rho(0, l_j)}\{L_{(0, l_j)}\}, \quad j = 2, \dots, J.$$

of the expected losses of two fictive tranches $(0, u_j)$ and $(0, l_j)$.

Bootstrapping process: $E\{L_{(0, 3\%)}\}$ is traded on the market,

$$\begin{aligned} E\{L_{(3\%, 6\%)}\} &= E_{\rho(0, 6\%)}\{L_{(0, 6\%)}\} - E_{\rho(0, 3\%)}\{L_{(0, 3\%)}\}, \\ E\{L_{(6\%, 9\%)}\} &= E_{\rho(0, 9\%)}\{L_{(0, 9\%)}\} - E_{\rho(0, 6\%)}\{L_{(0, 6\%)}\}, \dots \end{aligned}$$



Base Correlations over Time

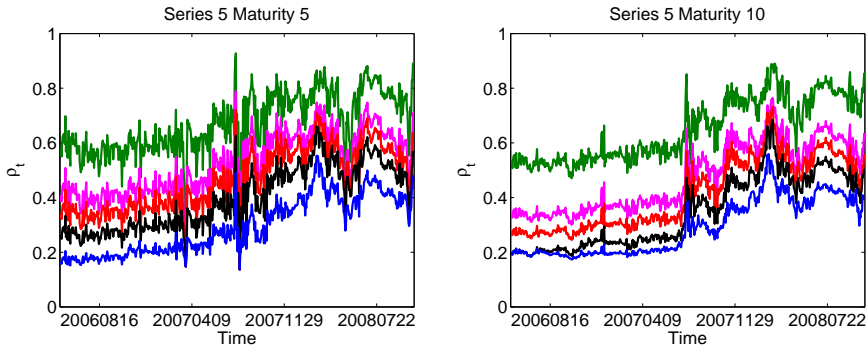


Figure 4: BC of iTraxx tranches, Series 5, maturity 5 (left) and 10 (right) years, data from 20060510-20081023. Tranches: 1, 2, 3, 4, 5.



Base Correlation Surfaces

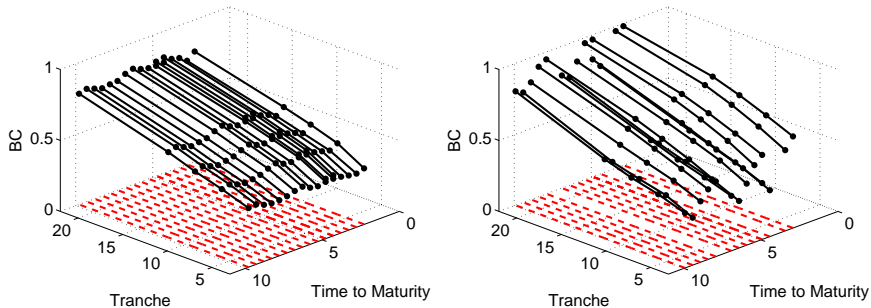


Figure 5: Implied base correlations on day 20080909 (left) and 20090119 (right).



Dynamic Semiparametric Factor Model

$$Y_{t,k} = m_0(X_{t,k}) + \sum_{l=1}^L Z_{t,l} m_l(X_{t,k}) + \varepsilon_{t,k} = Z_t^\top A \psi(X_{t,k}) + \varepsilon_{t,k}$$

$Y_{t,k}$ log-spreads and Z-transformed BC on day t , $t = 1, \dots, T$

k intra-day numbering of BCs on day t , $k = 1, \dots, K_t$

$X_{t,k}$ two-dimensional vector of the tranche seniority
and the time-to-maturity

m_l factor functions, **time invariant**, nonparametric estimation

$Z_{t,l}$ time series, $l = 0, \dots, L$, **dynamic behavior**

$\psi(X_{t,k})$ tensor B-spline basis

A coefficient matrix



Estimation

Using an iterative algorithm:

$$(\hat{Z}_t, \hat{A}) = \arg \min_{Z_t, A} \sum_{t=1}^T \sum_{k=1}^{K_t} \left\{ Y_{t,k} - Z_t^\top A \psi(X_{t,k}) \right\}^2$$

Selection of L , the numbers of spline knots R_1 , R_2 and the orders of splines k_1 , k_2 by maximising the explained variance criterion:

$$EV(L, R_1, r_1, R_2, r_2) = 1 - \frac{\sum_{t=1}^T \sum_{k=1}^{K_t} \left\{ Y_{t,k} - \sum_{l=1}^L Z_{t,l} m_l(X_{t,k}) \right\}^2}{\sum_{t=1}^T \sum_{k=1}^{K_t} \left\{ Y_{t,j} - \tilde{m}_0(X_{t,k}) \right\}^2},$$

where \tilde{m}_0 is an empirical mean surface.



DSFM without the Mean Factor

Reduce the number of factors estimated in the iterative algorithm by first subtracting the empirical mean \tilde{m}_0 and then fitting the DSFM:

$$Y_{t,k} = \tilde{m}_0(X_{t,k}) + \sum_{l=1}^L Z_{t,l} m_l(X_{t,k}) + \varepsilon_{t,k} = \tilde{m}_0(X_{t,k}) + Z_t^\top A \psi(X_{t,k}) + \varepsilon_{t,k},$$

where m_l are new factor functions, $l = 1, \dots, L$.



Data

- Series 2-10
- Maturities 5, 7, 10Y
- 1004 days between
20050330-20090202
- 49 502 data points

Year	3Y	5Y	7Y	10Y
2005	0	1478	715	1532
2006	181	3998	3739	4005
2007	75	5155	5170	5172
2008	232	5904	5916	5932
2009	0	260	263	263
All	488	16740	15803	16840

Table 1: Number of observed values of iTraxx tranches in the period 20050330-20090202.



Data Preparation

- Convert the upfront payment quotes of the equity tranche to standard spreads using the Gaussian copula model.
- Since the data are monotone in the tranche seniority direction and positive, use log-spreads and Z-transformed-BC.

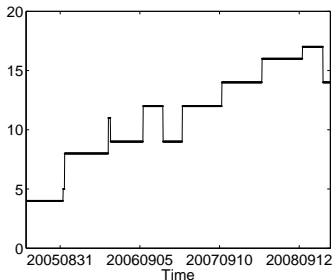


Figure 6: Daily number of curves for every surface during the period 20050330-20090202.



DSFM for Z-transformed-BC

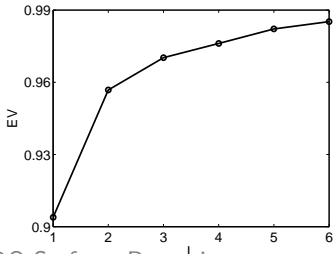
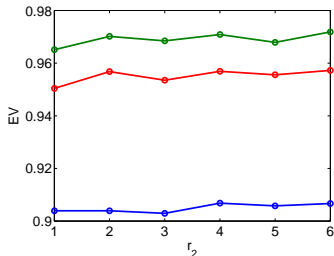
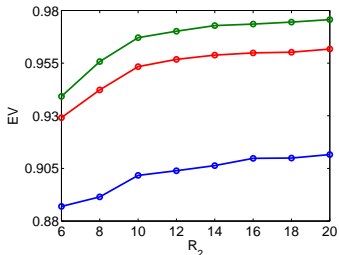


Figure 7: Proportion of the explained variance as a function of R_2 (up left) with $r_2 = 2$, as a function of r_2 (up right) with $R_2 = 10$, as a function of L (down) for $L = 1$, $L = 2$, $L = 3$, $r_1 = 2$ and $R_1 = 5$.



DSFM w/o Mean F. for Z-transformed-BC

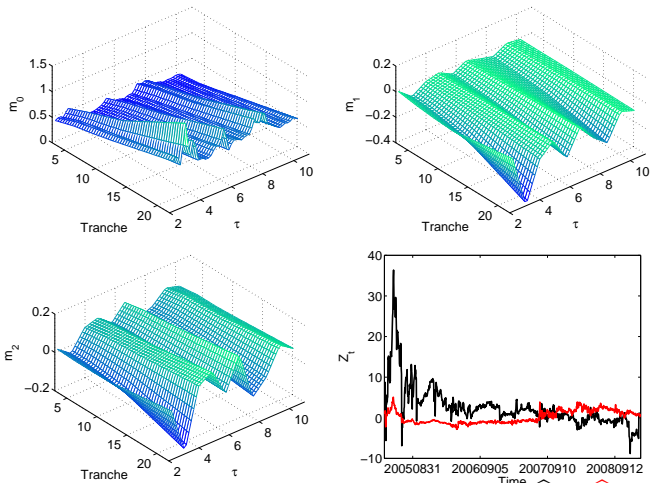


Figure 8: Estimated factor functions and loadings ($\hat{Z}_{t,1}$, $\hat{Z}_{t,2}$).



DSFM Estimation Results

For DSFM for both data types

- $\hat{Z}_{t,1}$ is a slope-curvature factor
- $\hat{Z}_{t,2}$ is a shift factor

Model	Log-Spr	Z-BC
DSFM	0.016	0.004
DSFM w/o mean f.	0.045	0.006

Table 2: Mean squared error of the in-sample fit.



DSFM without the mean factor Fit

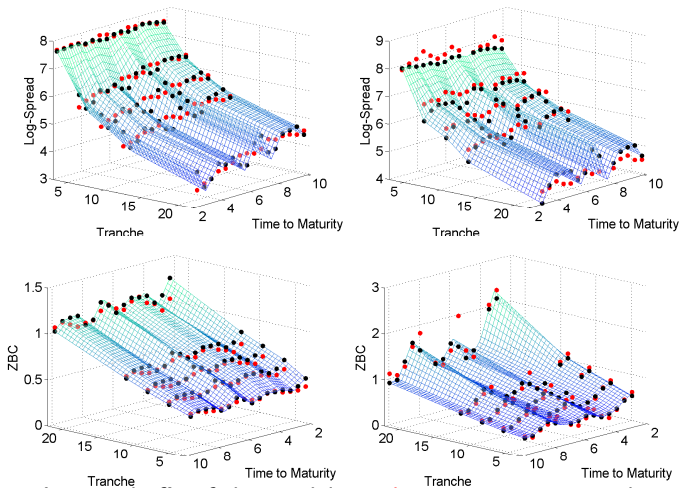


Figure 9: In-sample fit of the models to data on 20080909 and 20090119.
CDO Surfaces Dynamics



Curve Trades

So, how can I make money with this?

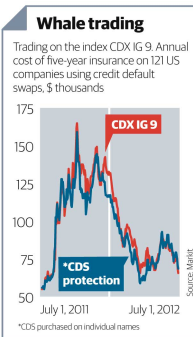
Combine tranches of different time to maturity, see Felsenheimer et al. (2004) and Kakodkar et al. (2006):

- Flattener – sell a long-term tranche, buy a short-term tranche
Example: sell 10Y 3-6% and buy 5Y 6-9%
Outlook: bullish long-term, bearish short-term
- Steepener – opposite trade



JP Morgan Trading Loss, May 2012

J.P. Morgan's flattener – bought 5Y CDX IG 9 index, sold 10Y CDX IG 9 index in a 3:1 ratio. The final loss reached \$6.2 billion.



Flattener

Sell protection at $s_1(t_0)$ for the period $[t_0, T_1]$ and buy protection at $s_2(t_0)$ for $[t_0, T_2]$, $T_1 > T_2$. At t_0 for $\ell = 1, 2$:

$$\text{MTM}_\ell(t_0) = \sum_{t=t_1}^{T_\ell} \beta(t_0, t) [s_\ell(t_0) \Delta t \mathbb{E}\{F_\ell(t)\} - \mathbb{E}\{L_\ell(t) - L_\ell(t - \Delta t)\}] = 0.$$

At $\tilde{t} > t_0$, the market quotes $s_\ell(\tilde{t})$ and

$$\text{MTM}_\ell(\tilde{t}) = \{s_\ell(t_0) - s_\ell(\tilde{t})\} \sum_{t=\tilde{t}_1}^{T_\ell} \beta(\tilde{t}, t) \Delta t \mathbb{E}\{F_\ell(t)\}.$$



Curve Trade

- A positive MTM means a positive value to the protection seller.
- If the protection seller closes the position at time \tilde{t} , then receives from the protection buyer $MTM_{\ell}(\tilde{t})$.
- Flattener-trader aims to maximize the total MTM value

$$PL(\tilde{t}) = MTM_1(\tilde{t}) - MTM_2(\tilde{t}).$$



Risk in Curve Trades

- If one buys 5Y 6-9% and sells 10Y 6-9%, then the trade is hedged for default until the maturity of the 5Y tranche. Defaults that emerge from 10Y 6-9% are covered by 5Y 6-9% till it expires.
- Series differ in the composition of the collateral.
- If one buys 5Y 6-9% and sells 10Y 3-6%, then these tranches provide protection of different portion of portfolio risk. If there is any default in 10Y 3-6%, then we must deliver a payment obligation and incur a loss.



Empirical Study

Idea

- Use DSFM to forecast spread and BC surfaces
- Calculate forecasted MTM surfaces
- Recover those tranches that maximise P&L

Remarks

- Because of many missing data and short data histories, the standard econometric methods cannot be used for the forecasting.
- Consider trades that generate no or a positive carry – the spread of the long tranche doesn't exceed the spread of the short tranche.
- Do not account for default payments (no data of historical defaults in iTraxx), do not account for the positive carry.



Forecasting with DSFM in Rolling Windows

Let Y_t be log-spreads or Z-transformed-BC.

- Consider a rolling window of $w = 250$.
- Estimate the DSFM using $\{Y_\nu\}_{\nu=t-w+1}^t$ for $t = w, \dots, T - h$.
- As a result, we get $T - w + 1$ times $\hat{m} = (\hat{m}_0, \dots, \hat{m}_L)^\top$ and $\hat{Z}_t = (\hat{Z}_{t,0}, \dots, \hat{Z}_{t,L})^\top$ of length w .
- Compute h -day forecast of the factor loadings using VAR.
- Due to the fixed issuing scheme, $X_{t+h,k}$ is not forecasted.
- Calculate the forecast \hat{Y}_{t+h} from the forecast \hat{Z}_{t+h} .
- Transform \hat{Y}_{t+h} suitably to get $\hat{s}(t+h)$ or $\hat{\rho}(t+h)$.



Forecasting MTM Surfaces

For predicted $\{\hat{s}_k(t), \hat{\rho}_k(t)\}$, $t = w + h, \dots, T$, $k = 1, \dots, K_t$, compute $\widehat{\text{MTM}}_k(t)$, where the initial spread $s_k(t_0)$ is observed on $t_0 = t - h$.

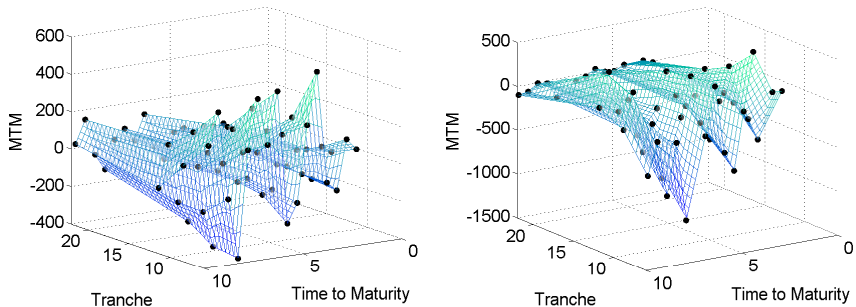


Figure 10: MTM surfaces on 20080909 (left) and 20090119 (right) calculated using one-day spread and BC predictions obtained with the DSFM.



Transaction Costs

Calculate the ask (bid) spread by increasing (reducing) the observed spread by the following percentage:

Maturity	1	2	3	4	5
5Y	1.88	1.78	2.52	3.77	6.28
7Y	1.49	1.65	2.31	2.97	4.87
10Y	1.41	1.66	1.83	2.52	4.09

Table 3: Average bid-ask spread excess over the mid spread as a percentage of the mid spread for Series 8 during the period 20070920-20090202.



Trading Strategies

Construct a curve trade

1. Fit and forecast the DSFM models to spreads and BC.
2. Calculate h -day forecasts of the MTM surfaces.
3. Recover which two tranches optimize a given strategy.

Strategies – restrict the choice to a flattener (or a steepener) with

1. a fixed tranche and fixed maturities,
2. a fixed tranche and all maturities,
3. all tranches and fixed maturities,
4. all tranches and all maturities (no restrictions),

or allow to combine flatteners and steepeners.



Backtesting

- Consider the time horizons $h = 1, 5, 20$ days.
- For the tranches that optimize a given strategy, check the corresponding historical market spreads, calculate the resulting MTM values, and the realised P&L.



Mean of Daily Gains in Percent

Strategy	DSFM						DSFM without the mean factor					
	1 day		1 week		1 month		1 day		1 week		1 month	
	LZ	Z	LZ	Z	LZ	Z	LZ	Z	LZ	Z	LZ	Z
FS-AIIT-AIIM	0.29	0.35	0.10	0.13	0.05	0.04	0.30	0.30	0.11	0.13	0.04	0.03
FS-T2-AIIM	0.29	0.33	0.13	0.14	0.06	0.05	0.33	0.28	0.12	0.13	0.05	0.04
FS-T3-AIIM	0.19	0.22	0.07	0.08	0.03	0.02	0.18	0.23	0.07	0.07	0.02	0.02
FS-T4-AIIM	0.14	0.17	0.04	0.05	0.02	0.01	0.12	0.18	0.04	0.05	0.01	0.01
FS-T5-AIIM	0.09	0.11	0.04	0.04	0.02	0.01	0.08	0.11	0.03	0.04	0.01	0.01
F-T2-AIIM	0.30	0.34	0.12	0.12	0.06	0.04	0.28	0.32	0.12	0.11	0.05	0.04
F-T3-AIIM	0.16	0.20	0.06	0.07	0.02	0.01	0.16	0.20	0.06	0.07	0.02	0.01
F-T4-AIIM	0.10	0.15	0.03	0.04	0.01	0.01	0.10	0.15	0.03	0.04	0.01	0.01
F-T5-AIIM	0.09	0.10	0.03	0.03	0.01	0.01	0.08	0.10	0.03	0.03	0.01	0.01
S-T2-AIIM	0.39	0.43	0.15	0.17	0.07	0.06	0.45	0.46	0.13	0.16	0.05	0.06
S-T3-AIIM	0.27	0.31	0.09	0.10	0.04	0.03	0.30	0.35	0.09	0.09	0.02	0.02
S-T4-AIIM	0.20	0.25	0.06	0.07	0.03	0.02	0.20	0.24	0.05	0.06	0.01	0.01
S-T5-AIIM	0.12	0.15	0.04	0.04	0.02	0.02	0.12	0.16	0.04	0.04	0.01	0.02
F-AIIT-105	0.20	0.21	0.07	0.09	0.03	0.02	0.19	0.21	0.06	0.08	0.02	0.02
F-AIIT-107	0.22	0.26	0.07	0.08	0.03	0.03	0.25	0.25	0.08	0.08	0.03	0.03
F-AIIT-75	0.15	0.15	0.04	0.06	0.01	-0.00	0.14	0.15	0.04	0.05	0.01	0.00
S-AIIT-510	0.16	0.17	0.05	0.08	0.02	0.01	0.16	0.18	0.05	0.08	0.01	0.00
S-AIIT-710	0.17	0.23	0.05	0.10	0.02	0.03	0.21	0.25	0.07	0.09	0.02	0.02
S-AIIT-57	0.11	0.13	0.03	0.03	0.01	-0.01	0.12	0.13	0.03	0.03	0.00	-0.01

Table 4: Calculations based on predictions of log-spreads and Z-transformed BCs marked as LZ; based only on Z-transformed BCs marked as Z.



Investor's Strategy

Follow a certain strategy over a year and constantly rebalance the portfolio. At t_0 enter an optimal (according to the DSFM) curve trade for h -day horizon. At $t_0 + h$ chose:

1. keep the current position for the next h -days,
2. close the current position and enter a new one.

Assume a margin of 10% of your notional. Every time the position is closed, add to the margin the realized P&L. If margin ≤ 0 , quit the trade.



Investor's Strategy

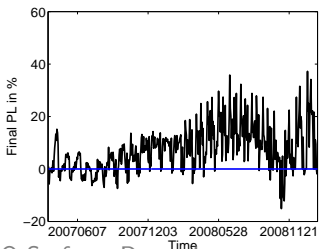
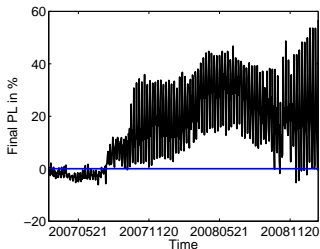
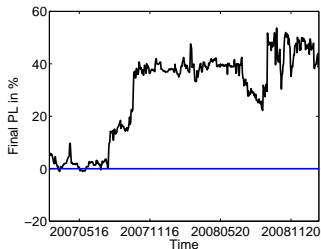


Figure 11: Combined flatteners and steepeners from all tranches and all maturities. Closing profits after one year. Rebalancing after: 1 day (upper left), 1 week (upper right), 1 month (lower). Calculations based on the DSFM predictions of logspreads and Z-transformed BCs.



Investor's Strategy

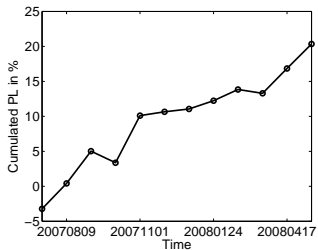
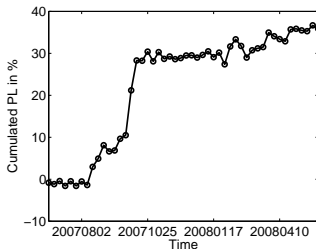
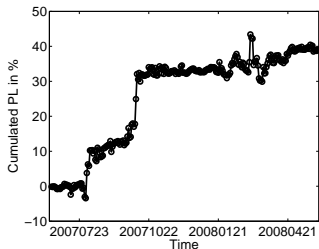


Figure 12: Daily cumulated P&L over one year 20070614–20080529. Rebalancing after: 1 day (upper left), 1 week (upper right), 1 month (lower). Calculations based on the DSFM predictions of log-spreads and Z-transformed BCs.









Conclusions

- Investigated evolution over time of tranche spread surfaces and base correlation surfaces using the DSFM.
- Empirical study is conducted using an extensive data set of 49,502 observations of iTraxx Europe tranches in 2005-2009.
- Proposed a modification to the classic DSFM.
- Both DSFMs successfully reproduce the dynamics in data.
- Used DSFM in constructing the curve trades.
- Analysed the performance of 43 strategies that combine different positions, tranches, and maturities.
- Backtesting showed high daily gains of the resulting curve trades.



References

-  C. Bluhm and L. Overbeck
Structured Credit Portfolio Analysis, Baskets and CDOs
Chapman & Hall/Crc Financial Mathematics Series, 2006
-  J. Felsenheimer, P. Gisdakis, and M. Zaiser
DJ iTraxx: Credit at its best!
Credit derivatives special HVB Corporates & Markets, 2004
-  M. R. Fengler, W. K. Härdle, and E. Mammen
A semiparametric factor model for implied volatility surface dynamics
Journal of Financial Econometrics, 2007
-  C. Gourieroux and J. Jasiak
Dynamic factor models
Econometric Reviews, 2001
-  A. Kakodkar, S. Galiani, J. G. Jónsson, and A. Gallo
Credit derivatives handbook, A guide to the exotics credit derivatives market
Technical report Merrill Lynch, 2006
-  B. Park, E. Mammen, W. K. Härdle, and S. Borak
Dynamic Semiparametric Factor Models
Journal of the American Statistical Association, 2009

CDO Surfaces Dynamics

Barbara Choroś-Tomczyk

Wolfgang Karl Härdle

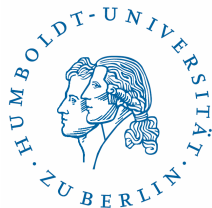
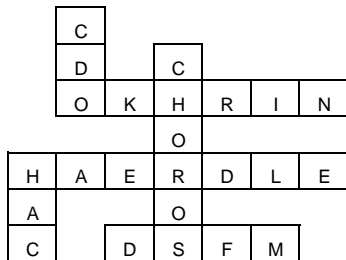
Ostap Okhrin

Ladislaus von Bortkiewicz

Chair of Statistics

C.A.S.E. - Center for Applied Statistics and
Economics

Humboldt-Universität zu Berlin



DSFM for Log-Spreads

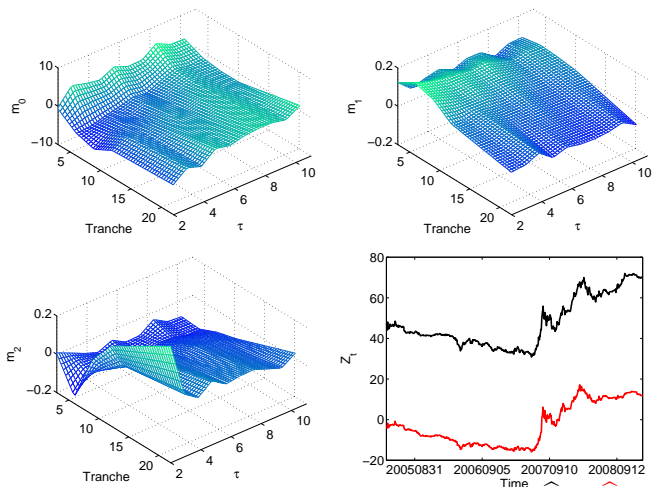


Figure 13: Estimated factor functions and loadings $(\hat{Z}_{t,1}, \hat{Z}_{t,2})$.

▶ Talk



DSFM without the Mean Factor for Log-Spreads

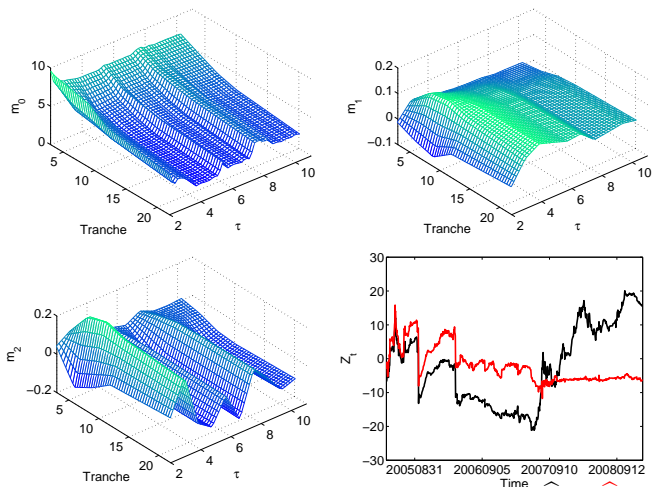


Figure 14: Estimated factor functions and loadings $(\hat{Z}_{t,1}, \hat{Z}_{t,2})$.

▶ Talk



DSFM for Z-transformed-BC

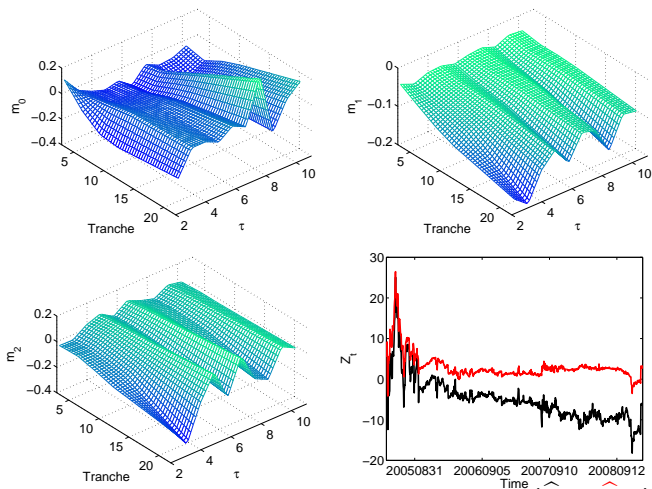


Figure 15: Estimated factor functions and loadings ($\hat{Z}_{t,1}$, $\hat{Z}_{t,2}$).

